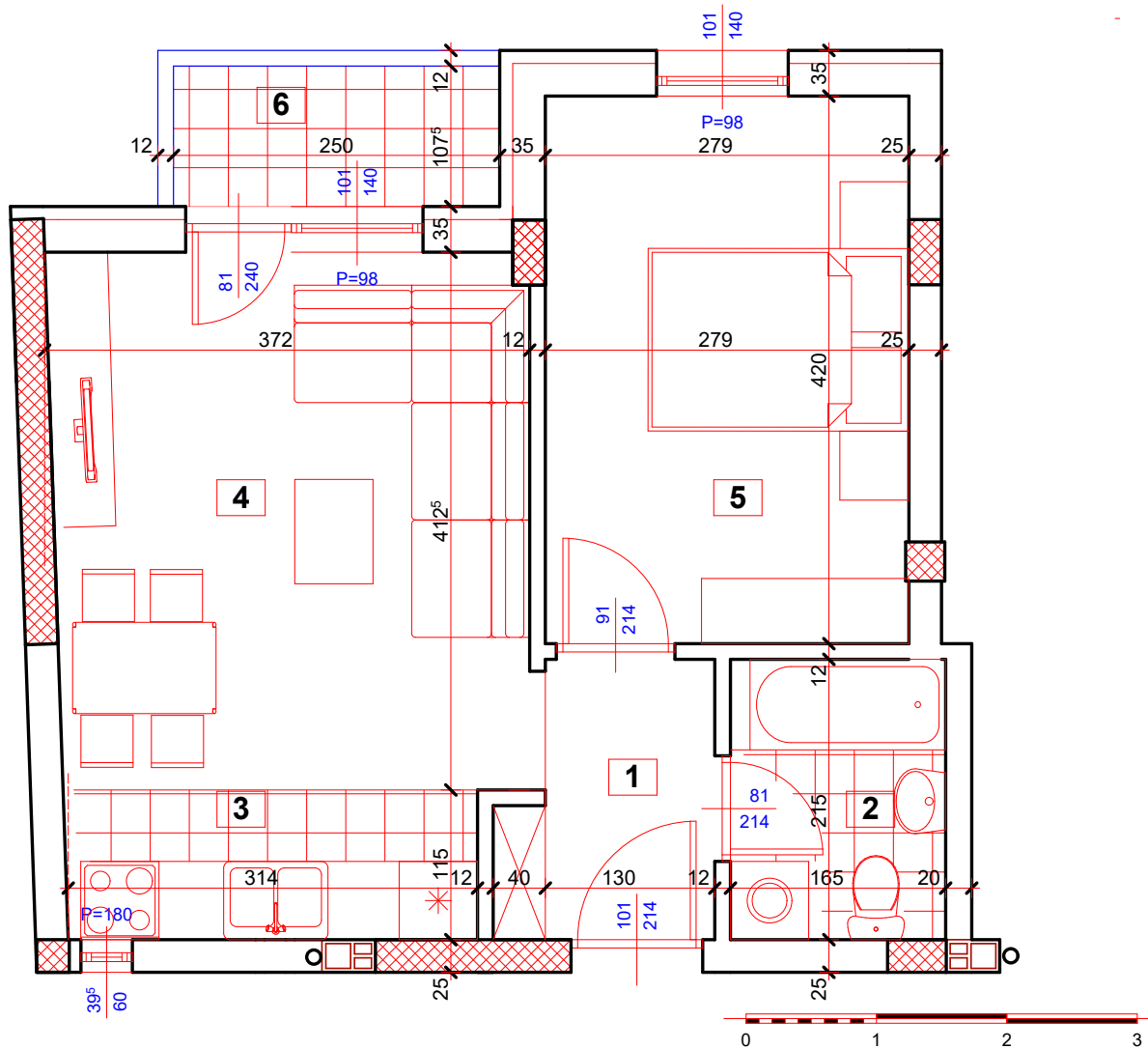


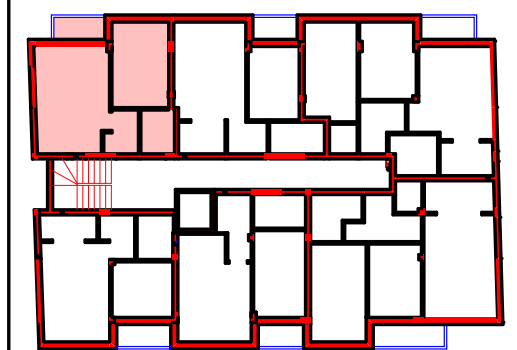
STAMBENI OBJEKAT, P+3+Pk
ulica Zlatarićeva br. 18, Petrovaradin

S15



stan 15 - dvosoban				
br.	naziv prostorije	obrada poda	podna P. [m ²]	korisna P. [m ²]
1	ulaz	parket	3,20	3,20
2	kupatilo	keramika	3,55	3,55
3	kuhinja	keramika	3,62	3,62
4	dnevna soba sa trpezarijom	parket	15,12	15,12
5	soba	parket	11,70	11,70
6	terasa	keramika	2,69	2,69
ukupno stan 15			netto: 39,88	39,88
			netto (-3%): 38,68	38,68

D.O.O. PRIMUS INVEST
Veternik



S15	STAN S15, dvosoban - 38,68 m²
SPRAT	NAPOMENA
TREĆI	