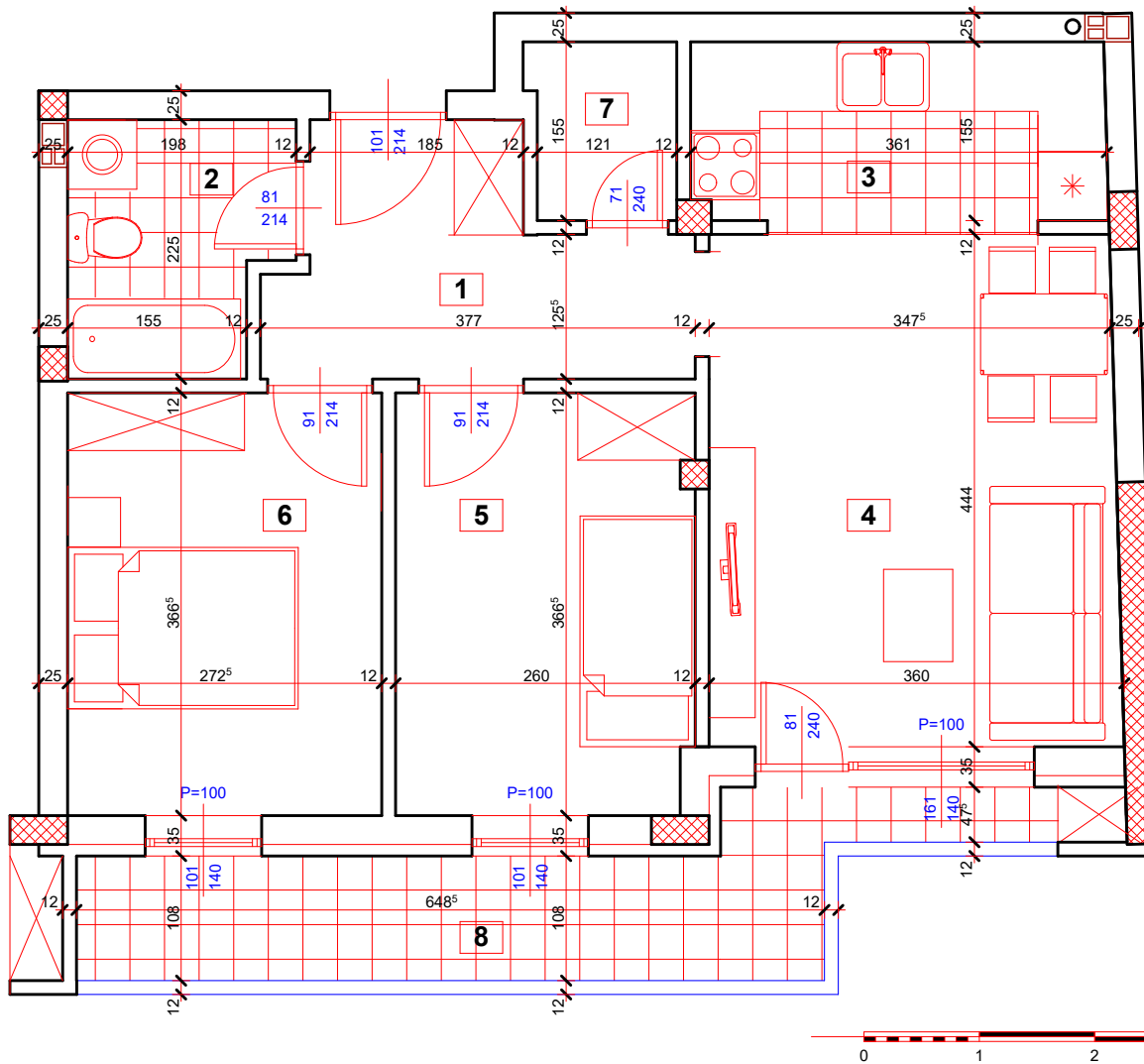


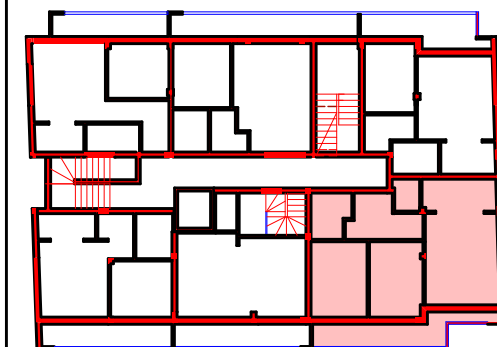
STAMBENI OBJEKAT, P+3+Pk
ulica Zlatarićeva br. 18, Petrovaradin

S25



stan 25 - dvoiposoban				
br.	naziv prostorije	obrada poda	podna P. [m ²]	korisna P. [m ²]
1	ulaz	parket	5,44	5,44
2	kupatilo	keramika	4,01	4,01
3	kuhinja	keramika	5,87	5,87
4	dnevna soba sa trpezarijom	parket	16,66	16,66
5	soba	parket	7,94	7,94
6	soba	parket	8,35	8,35
7	ostava	keramika	1,87	1,87
8	terasa	keramika	12,33	12,33
ukupno stan 25			netto: 62,47	62,47
			netto (-3%): 60,60	60,60

D.O.O. PRIMUS INVEST
Veternik



S25	STAN S25, dvoiposoban - 60,60 m²
SPRAT	NAPOMENA
POTKROVLJE 1	